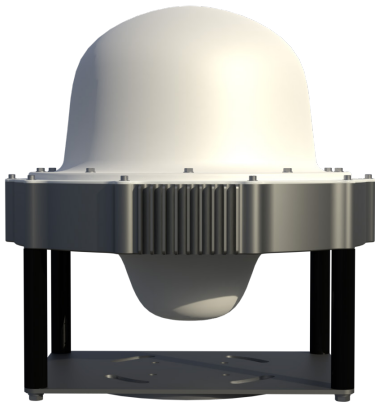


O W L | WATCH
2D & 3D DIGITAL RADAR | WISELY

GROUNDWARE® GA1360



SHORT-RANGE 360° 2D RADAR SYSTEM

O.W.L. GroundAware GA1360 2D digital multi-beamforming radar system combines advanced digital beamforming radar technology, classification intelligence, reconfigurability, and easy integration with other security systems (such as video management and access control systems) to bring 360° of real-time, all-weather situational awareness for the physical security of perimeters and other sensitive areas of critical sites.

As the foundation for event-based layered security, GA1360 enables automated detection, tracking, deterrence, and response to intrusions within a 1 km radius of critical sites – that's up to 750 acres or 300 hectares covered by a single radar.

FEATURES

- Digital beamforming radar technology for highly reliable all-weather detection and tracking of all target types
- Seamless integration with cameras, VMS, access control, audible alarms, security lights, drones, and more
- Target classification to distinguish among humans, animals, and vehicles for alarming on targets of concern, avoiding nuisances
- Customizable alarm zones with automatic response triggers
- Wide-area coverage requires fewer sensors and less infrastructure for lower total surveillance costs
- Solid state system with no moving parts
- Backed by full warranty

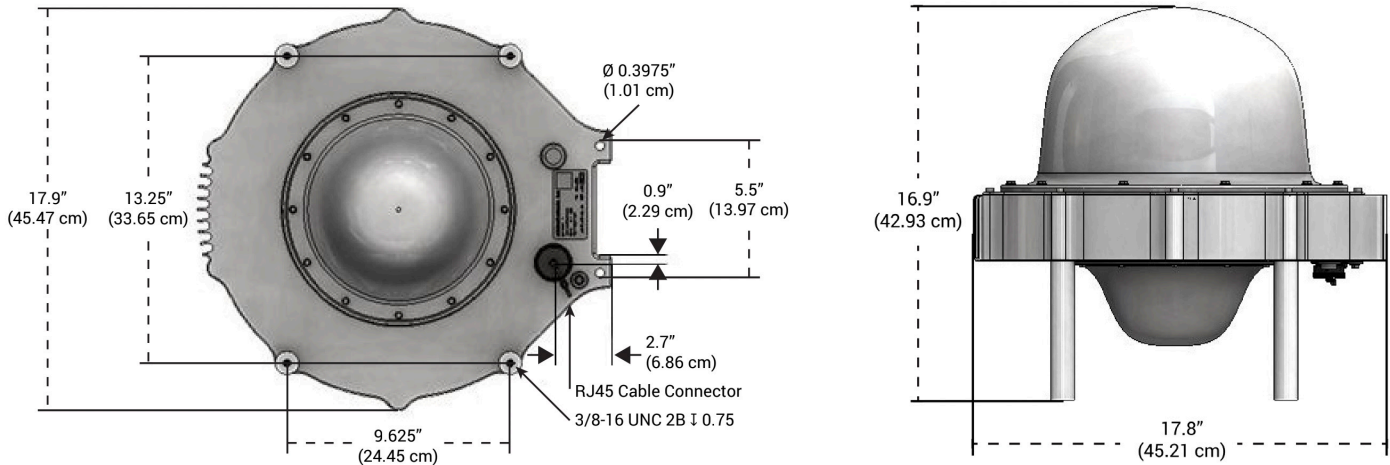
APPLICATIONS

Designed for ground and water surface applications, GA1360 is a powerful solution for protecting a range of critical sites:

- | | |
|---|---|
|  Electrical transmission substations |  Logistics facilities |
|  Water reservoirs |  Manufacturing plants |
|  Treatment plants |  Airports and seaports |
|  Natural gas facilities |  Correctional facilities |
|  Wind and solar sites |  School campuses |
|  Oil and gas sites |  Corporate campuses |

GA1360 can be mounted on towers, poles, buildings, and mobile platforms.

GROUND AWARE® GA1360



TECH SPECS

Architecture:	Simultaneous multiple beams	Software Defined Update Rate:	1 Hz - 5 Hz
Processing Type:	Pulsed Doppler	Minimum Detectable Velocity:	0.25-1 mph
Frequency Band:	S (3.0 to 3.3 GHz)	Weight:	30 lbs 13.6 kg
Range Resolution:	5 or 10 m (adjustable)	Dimensions:	45.7cm x 45.7cm x 40.6cm 18" x 18" x 16"
Selectable Frequency Bands:	6 calibrated	Power Draw:	35W
Instrumented Range:	1.25 km Detection Ranges* Large Aircraft: 1 km Vehicle: 1 km Walker: 500 m	Operating Temperature:	-20°C to +60°C -4°F to +140°F
Azimuth FOV:	360°	Component Temperature:	-40°C to +85°C -40°F to +185°F
Elevation FOV:	40°	Heating/Cooling:	Passive

* Achieving maximum detection ranges requires sufficient mounting height and line of sight, especially for ground targets.

Observation Without Limits (O.W.L.), a Dynetics business, leverages 49 years of radar expertise to develop, manufacture, and support the O.W.L. GroundAware® family of 2D and 3D digital beamforming radar solutions. Critical infrastructure and government sectors around the world use O.W.L. solutions for ground, water surface, and low-altitude airspace surveillance as the foundation for their event-based layered security plans.

www.owlknows.com | +1 888-297-9559 | +1 (256) 713-5021

O W L
2D & 3D DIGITAL RADAR
WATCH WISELY